

CALL FOR MORE INFORMATION



FOR SALE

\$105,000

AVAILABLE LAND

0.87 Acres

PROPERTY HIGHLIGHTS

- Near Hard Corner
- Valencia County - Growing
- Market High Visibility

TRAFFIC COUNT

Manzano Expy: 4,176 VPD
Rio Communities Blvd: 5,525 VPD
(SitesUSA 2020)

AREA TRAFFIC GENERATORS



PROPERTY SNAPSHOT



12,743
2020 POPULATION
3 MILE RADIUS



7,890
2020 DAYTIME POPULATION
3 MILE RADIUS



\$55,761
2020 AVERAGE INCOME
3 MILE RADIUS



5,525 VPD
RIO COMMUNITIES BLVD

The information contained herein was obtained from sources deemed reliable; however, RESOLUT RE makes no guaranties, warranties or representations to the completeness or accuracy thereof. The presentation of this real estate information is subject to errors; omissions; change of price; prior sale or lease; or withdrawal without notice. RESOLUT RE, which provides real estate brokerage services, is a division of Reliance Retail, LLC, a Texas Limited Liability Company.

Daniel Kearney
dkearney@resolutre.com
505.337.0777

Austin Tidwell, CCIM
atidwell@resolutre.com
505.337.0777

Rob Powell, CCIM
rpowell@resolutre.com
505.337.0777
www.resolutre.com



Daniel Kearney
dkearney@resolutre.com
505.337.0777

Austin Tidwell, CCIM
atidwell@resolutre.com
505.337.0777

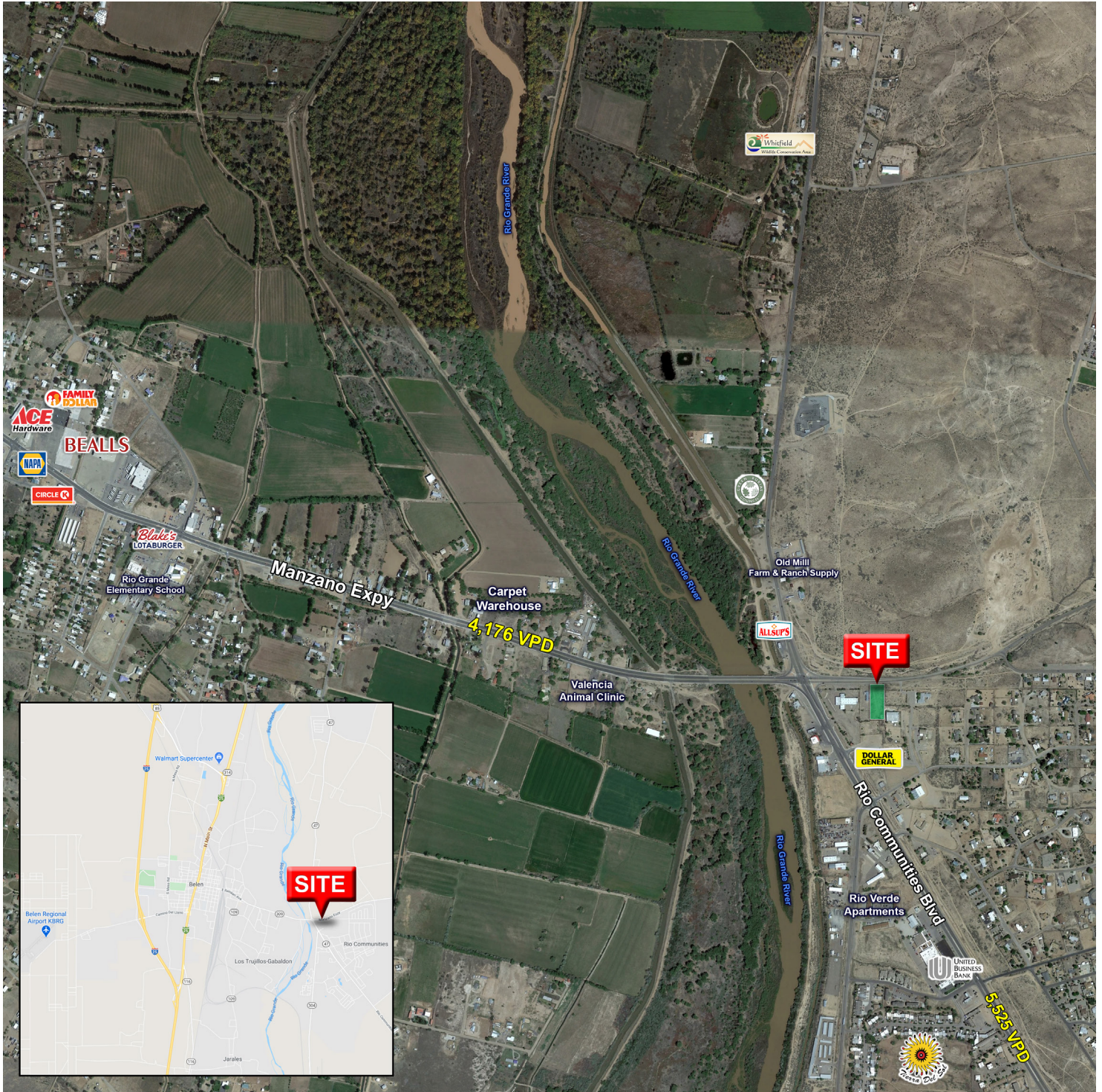
Rob Powell, CCIM
rpowell@resolutre.com
505.337.0777
www.resolutre.com



The information contained herein was obtained from sources deemed reliable; however, RESOLUT RE makes no guaranties, warranties or representations to the completeness or accuracy thereof. The presentation of this real estate information is subject to errors; omissions; change of price; prior sale or lease; or withdrawal without notice. RESOLUT RE, which provides real estate brokerage services, is a division of Reliance Retail, LLC, a Texas Limited Liability Company.

Rio Communities Land

SE CORNER OF HWY 47 AND MANZANO EXPY
103 MANZANO EXPY
RIO COMMUNITIES, NM 87002



Daniel Kearney
dkearney@resolutre.com
505.337.0777

Austin Tidwell, CCIM
atidwell@resolutre.com
505.337.0777

Rob Powell, CCIM
rpowell@resolutre.com
505.337.0777
www.resolutre.com



The information contained herein was obtained from sources deemed reliable; however, RESOLUT RE makes no guaranties, warranties or representations to the completeness or accuracy thereof. The presentation of this real estate information is subject to errors; omissions; change of price; prior sale or lease; or withdrawal without notice. RESOLUT RE, which provides real estate brokerage services, is a division of Reliance Retail, LLC, a Texas Limited Liability Company.