



CALL FOR MORE INFORMATION

DEMOGRAPHIC SNAPSHOT

	1 MILE	3 MILES	5 MILES
2019 Total Population	3,880	11,494	20,041
2019 Average HH Income	\$64,129	\$70,913	\$69,353
2019 Daytime Population	2,236	7,124	13,807

The information contained herein was obtained from sources deemed reliable; however, RESOLUT RE makes no guaranties, warranties or representations to the completeness or accuracy thereof. The presentation of this real estate information is subject to errors; omissions; change of price; prior sale or lease; or withdrawal without notice. RESOLUT RE, which provides real estate brokerage services, is a division of Reliance Retail, LLC, a Texas Limited Liability Company.

FOR SALE

AVAILABLE LAND

Lot 1: 9.79 Acres - \$4.00 PSF

Lot 2: 4.11 Acres - \$4.00 PSF

Lot 4: 1.99 Acres - \$6.00 PSF

PROPERTY HIGHLIGHTS

- Prime Multifamily or Hotel 9.79 Acres, additional 4.11 Acres Available
- Adjacent to existing hotels, retail and multifamily communities
- All utilities in place
- Can be subdivided

TRAFFIC COUNT

Hwy 361 : 14,417 VPD

(Costar 2018)

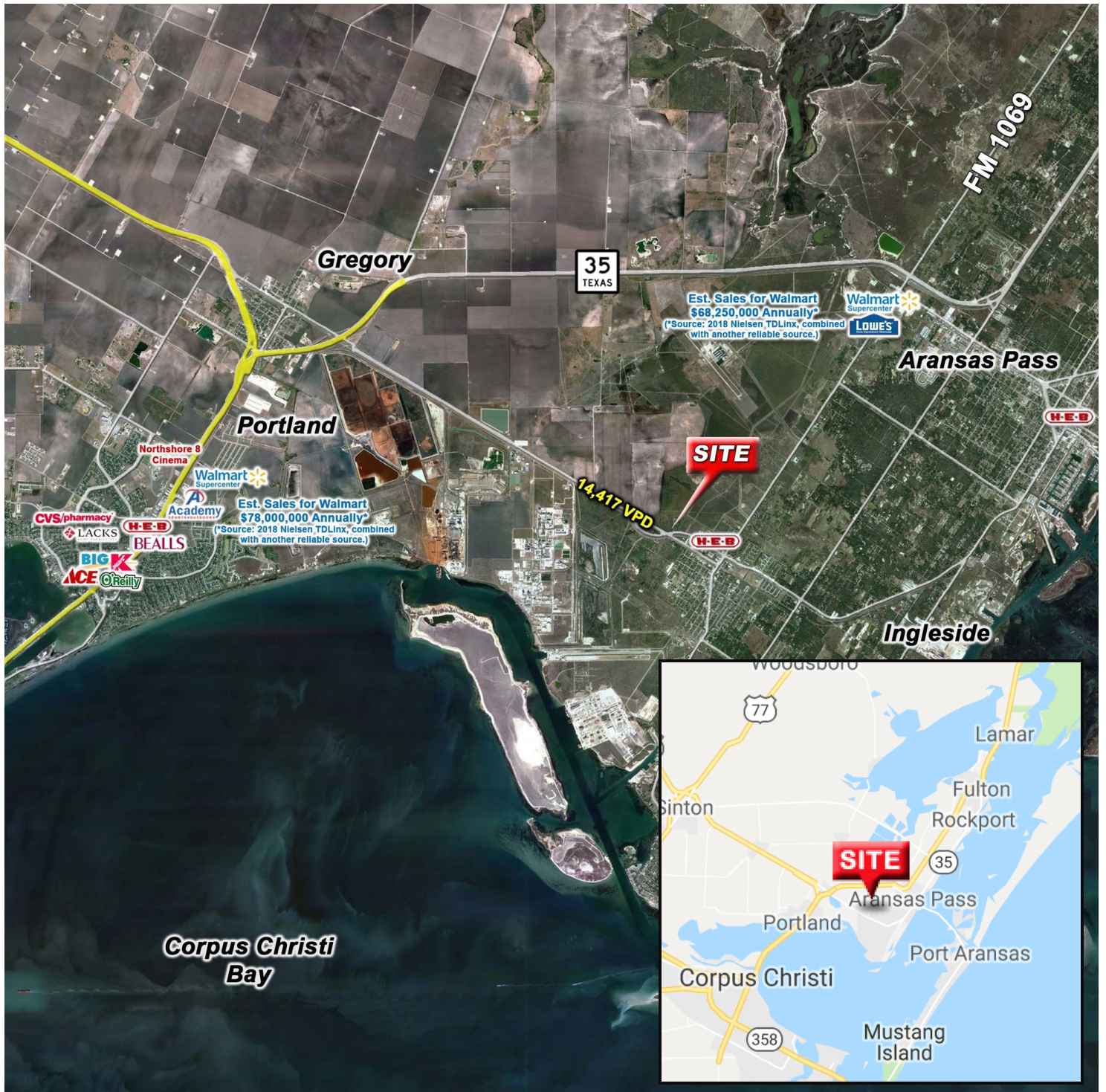
AREA TRAFFIC GENERATORS



Jerel Choate
jerel@resolutre.com
 512.474.5557
www.resolutre.com

Ingleside Land

NORTH SIDE OF HWY 361, WEST OF MAIN ST
2900 - 2945 HWY 361
INGLESIDE, TX 78362



Jerel Choate
jerel@resolutre.com
512.474.5557
www.resolutre.com



The information contained herein was obtained from sources deemed reliable; however, RESOLUT RE makes no guaranties, warranties or representations to the completeness or accuracy thereof. The presentation of this real estate information is subject to errors; omissions; change of price; prior sale or lease; or withdrawal without notice. RESOLUT RE, which provides real estate brokerage services, is a division of Reliance Retail, LLC, a Texas Limited Liability Company.

Ingleside & Corpus Christi Bay Industry Growth



- | | |
|---|--------------------------------|
| • Cheniere | \$ 13 Billion > 250 Employee |
| • Exxon Steam Cracker Plastic Plant | \$ 10 Billion > 600 Employees |
| • OxyChem Steam Cracker Plastic Plant | \$ 8 Billion > 150 Employees |
| • Chemours Chemical Plant | \$ 6 Billion |
| • Voestalpine "Verstylepene" Steel Brickets | \$ 7 Billion > 150 Employees |
| • TEDA TPCO America Corp. | \$ 2 Billion > 800 Employees |
| • Sinton Steel Plant (90% done deal) | \$ 2 Billion > 600 Employees |
| • OMW Steel Dynamics Plant | \$ 1.8 Billion |
| • Gray Oak Pipeline | \$ 1.5 Billion |
| • Occidental Petroleum | \$ 1.3 Billion > 250 Employees |
| • MODA Midstream Oil Terminal | \$ 1 Billion |
| • Mid-TX Oil Pipeline (from Midland) | \$ 500 Million |
| • Koch/Flint Hills | \$ 50 Million > 25 Employees |

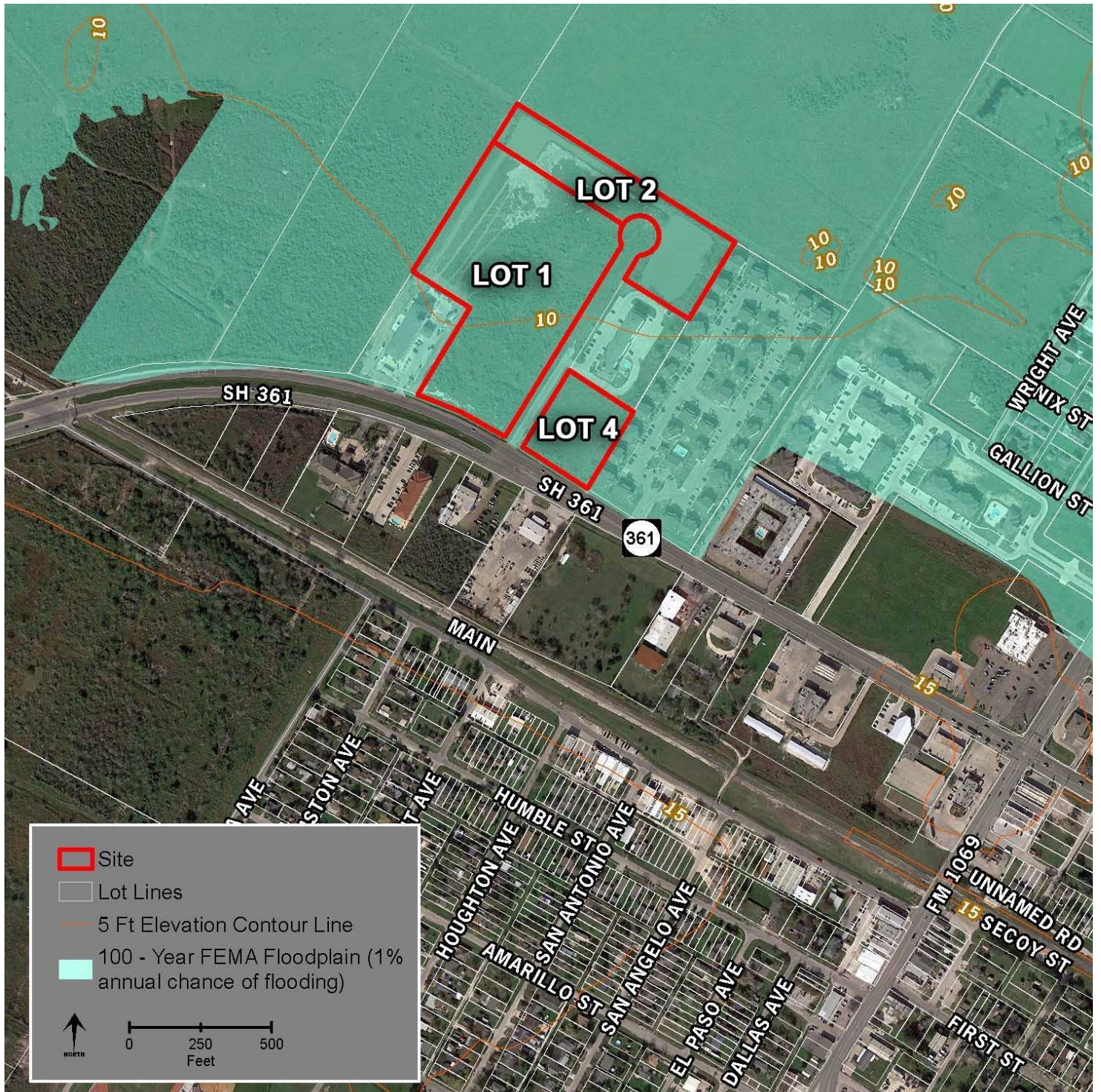
Jerel Choate
jerel@resolutre.com
 512.474.5557
www.resolutre.com



The information contained herein was obtained from sources deemed reliable; however, RESOLUT RE makes no guaranties, warranties or representations to the completeness or accuracy thereof. The presentation of this real estate information is subject to errors; omissions; change of price; prior sale or lease; or withdrawal without notice. RESOLUT RE, which provides real estate brokerage services, is a division of Reliance Retail, LLC, a Texas Limited Liability Company.

Ingleside Land

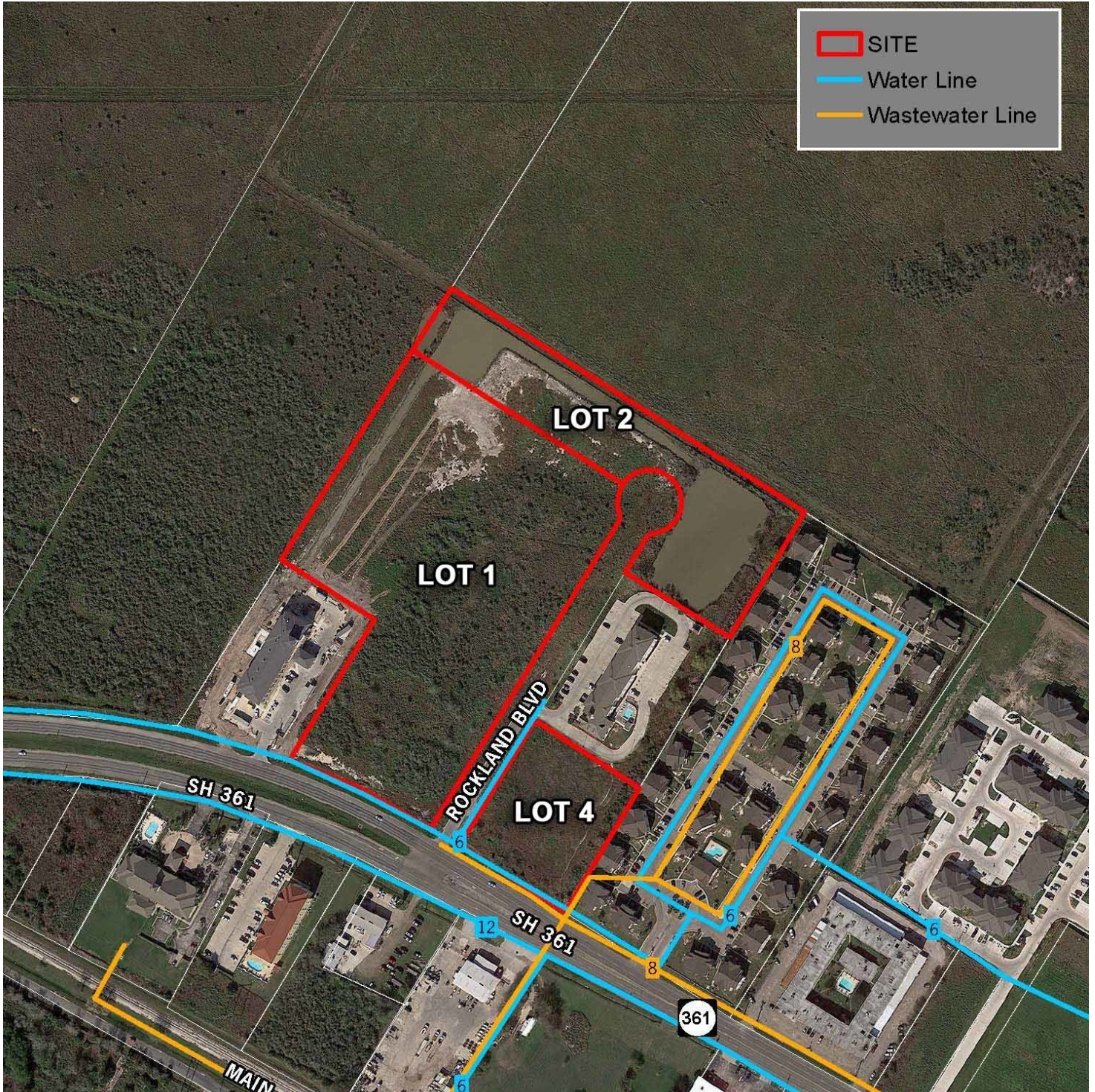
NORTH SIDE OF HWY 361, WEST OF MAIN ST
2900 - 2945 HWY 361
INGLESIDE, TX 78362



Jerel Choate
jerel@resolutre.com
512.474.5557
www.resolutre.com



The information contained herein was obtained from sources deemed reliable; however, RESOLUT RE makes no guaranties, warranties or representations to the completeness or accuracy thereof. The presentation of this real estate information is subject to errors; omissions; change of price; prior sale or lease; or withdrawal without notice. RESOLUT RE, which provides real estate brokerage services, is a division of Reliance Retail, LLC, a Texas Limited Liability Company.



Jerel Choate
jerel@resolutre.com
512.474.5557
www.resolutre.com



The information contained herein was obtained from sources deemed reliable; however, RESOLUT RE makes no guaranties, warranties or representations to the completeness or accuracy thereof. The presentation of this real estate information is subject to errors; omissions; change of price; prior sale or lease; or withdrawal without notice. RESOLUT RE, which provides real estate brokerage services, is a division of Reliance Retail, LLC, a Texas Limited Liability Company.

leads@resolutre.com

leads@resolutre.com