

CALL FOR MORE INFORMATION



AVAILABLE LAND

SOLD

PROPERTY HIGHLIGHTS

- 2 Zoning
- Excellent Downtown Location with almost No Vacancy
- Owner Will Consider Financing
- Owner Will Consider Trades
- Owner Will Consider Preparing Land for Development

TRAFFIC COUNT

Mechem Dr 15,282 VPD
(CoStor)

TRAFFIC GENERATORS



PROPERTY SNAPSHOT



7,769
2021 POPULATION
3 MILE RADIUS



8,100
2021 DAYTIME POPULATION
3 MILE RADIUS



\$51,674.06
2021 AVERAGE INCOME
3 MILE RADIUS



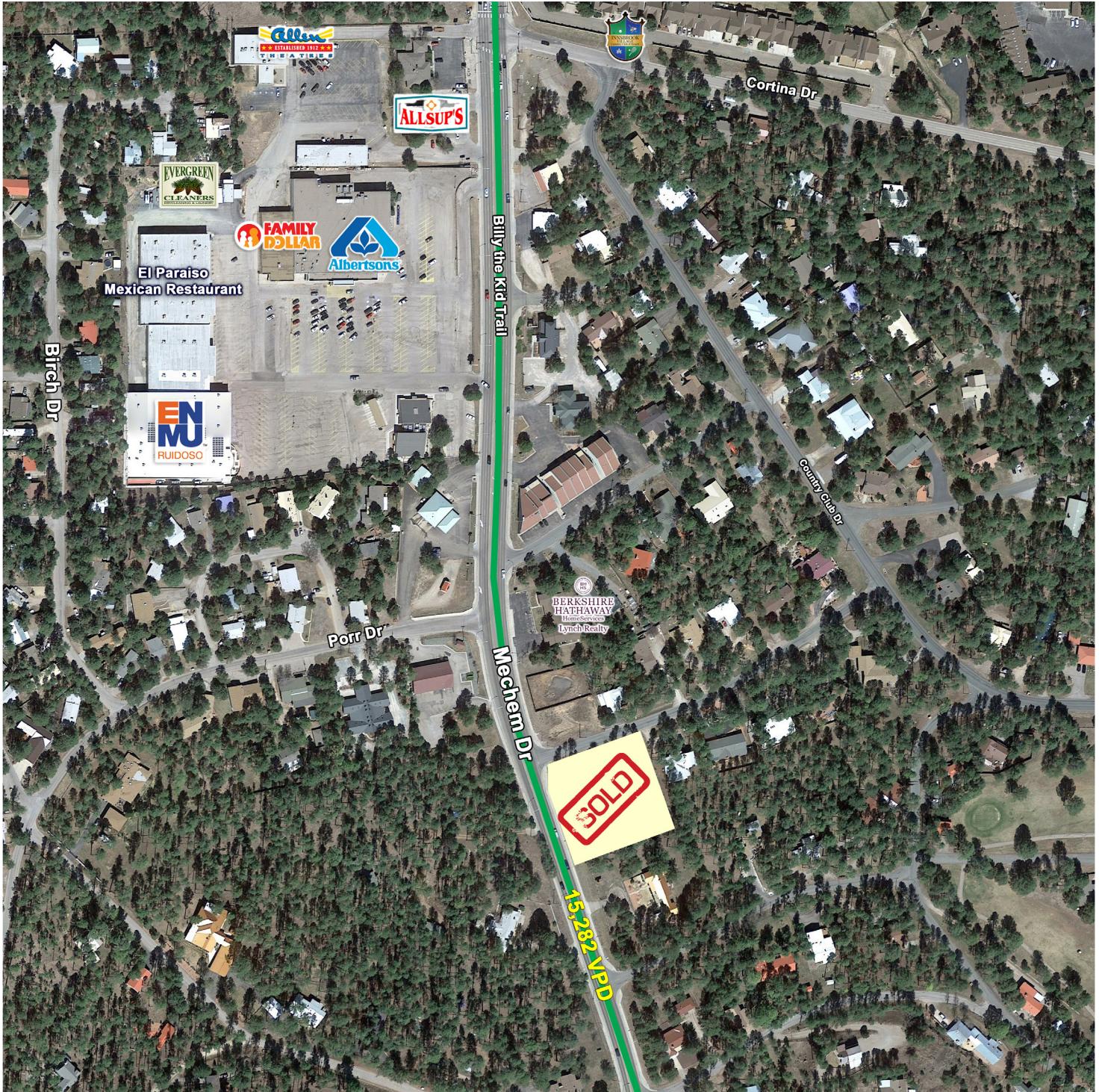
15,282 VPD
MECHAM DR

The information contained herein was obtained from sources deemed reliable; however, RESOLUT RE makes no guaranties, warranties or representations to the completeness or accuracy thereof. The presentation of this real estate information is subject to errors; omissions; change of price; prior sale or lease; or withdrawal without notice. RESOLUT RE, which provides real estate brokerage services, is a division of Reliance Retail, LLC, a Texas Limited Liability Company.

Christian File
cfile@resolutre.com
505.337.0777
www.resolutre.com

Ruidoso Commercial Land

SEQ OF MECHEM DR AND BUCKNER DR
608 MECHEM DRIVE RUIDOSO | NM 88345



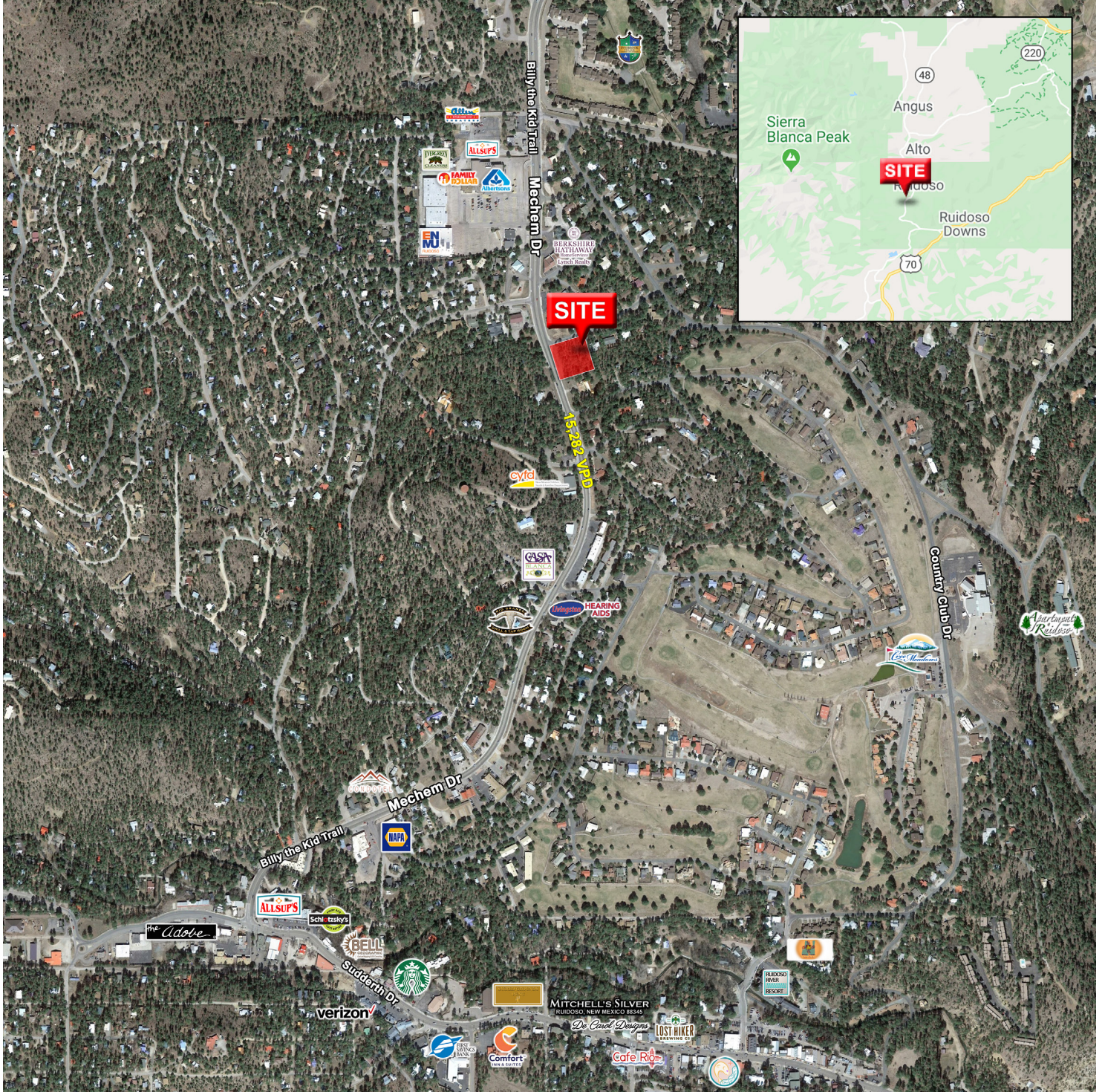
Christian File
cfile@resolutre.com
505.337.0777
www.resolutre.com



The information contained herein was obtained from sources deemed reliable; however, RESOLUT RE makes no guaranties, warranties or representations to the completeness or accuracy thereof. The presentation of this real estate information is subject to errors; omissions; change of price; prior sale or lease; or withdrawal without notice. RESOLUT RE, which provides real estate brokerage services, is a division of Reliance Retail, LLC, a Texas Limited Liability Company.

Ruidoso Commercial Land

SEQ OF MECHEM DR AND BUCKNER DR
608 MECHEM DRIVE RUIDOSO | NM 88345



Christian File
cfile@resolutre.com
505.337.0777
www.resolutre.com



The information contained herein was obtained from sources deemed reliable; however, RESOLUT RE makes no guaranties, warranties or representations to the completeness or accuracy thereof. The presentation of this real estate information is subject to errors; omissions; change of price; prior sale or lease; or withdrawal without notice. RESOLUT RE, which provides real estate brokerage services, is a division of Reliance Retail, LLC, a Texas Limited Liability Company.